

Medium voltage switchgear type K 900 S

with H 27 SEA load disconnecter
rated voltage 25 kV
rated current 400 A



DRIBO, spol. s r.o.

Pražákova 36
619 00 Brno
Czech Republic

Tel.: +420 533 101 111, Fax: +420 543 216 619, E-mail: dribo@dribo.cz, Internet: <http://www.dribo.eu>

ISO 9001
BUREAU VERITAS
Certification



General

The air-insulated K 900 S type fused switchboard meets the requirements of the EN 62271-102 standard. This type of switchboard is intended to be used in small transformer stations, using all the advantages of a concept of air-insulated switchboards. The switchboard is conducive to be installed in close-packed distribution stations (such as the Betonbau UK 1700, EEIKA TMT-minibox, Eltraf CTS bt, Marbeton KN 1720, etc.).

- The switchboard is equipped with three-pole H 27 SEA fused load disconnecter.
- The earthing switches with short-circuit making capability are provided with interlocking system.
- The drive units of the load disconnectors and the earthing switches are operated through a stubby hex driver lever.
- Screwed supporting parts are made of 2 mm galvanized sheets; the rear supporting wall is made of 2.5 mm galvanized sheet.
- The switchboard panel features one HV compartment with built-in consoles to attach the cables and surge arresters. The upper part of the panel rear side is opened. The console with the cable clamps provides for a downright outlet of the cables into the transformer area.
- The front side is equipped with left-hand hinged one-wing metallic doors, with mimic diagram drawn on the doors, and provided with glued multi-layer safety glass window used for the inspection of the switchboard by the inspection personnel, in a safe manner.
- By default, the doors are delivered in the RAL 2004 (orange) colour.
- The panel is equipped with central lock for which a special key to the DIN 43668, size no. 5 is to be used.
- An insulating protective plate used to separate the cable area during revision works, can be inserted when the panel door is closed.

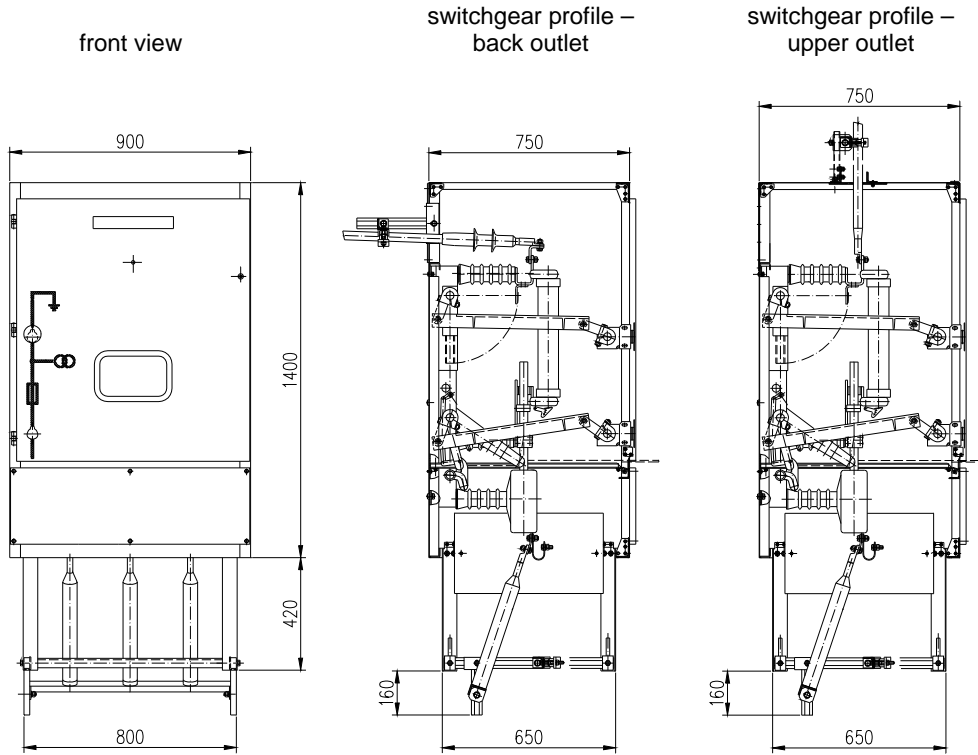
Technical data

rated voltage	U_r	kV	25
rated frequency	f_r	Hz	50
rated current	I_r	A	400
rated peak current	I_p	kA	40
rated short-time current	I_k	kA	16
rated making current	I_{ma}	kA	40
rated breaking current	I_1	A	400
closed-loop breaking current	I_2	A	400
inductive breaking current	I_3	A	10
capacitive breaking current	I_4	A	35
load-breaking current	I_{L200}	A	40
earth-fault current	I_{CE}	A	250
absorption current with earth fault	$\sqrt{3}I_{CL}$	A	45
frequency at transient recovery voltage	f_e	kHz	4,6
rated amplitude factor	τ		1,4
weight of the embedded-mounting type of the switchgear		kg	approx 150
weight of the floor-mounting type of the switchgear		kg	approx 175
rated short-time withstand power frequency voltage / 1min.			
against the earth, across the poles and between contacts		kV	125
across the insulating distance		kV	145
rated lightning pulse withstand voltage			
against the earth, across the poles and between contacts		kV	50
across the insulating distance		kV	60

Auxiliary equipment

- earthing switches with short-circuit making capability and interlocking system
- arrangement for mounting of the surge arresters
- arrangement for connecting of plastic insulation cables of up to 120 mm² cross section

The embedded-mounting type of the switchgear



The floor-mounting type of the switchgear

