

# Medium voltage compact switchgear type D 1200

rated voltage 25 kV  
rated current 630 A



**DRIBO, spol. s r.o.**

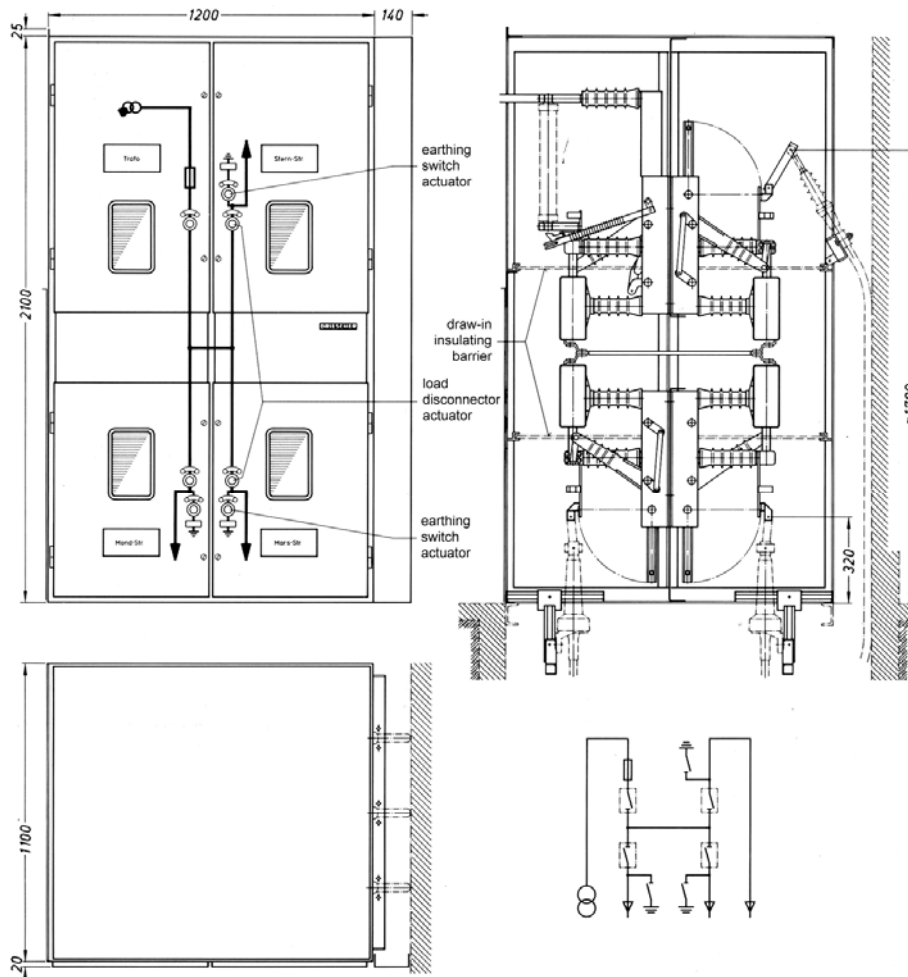
Pražákova 36  
619 00 Brno  
Czech Republic

Tel.: +420 533 101 111, Fax: +420 543 216 619, E-mail: [dribo@dribo.cz](mailto:dribo@dribo.cz), Internet: <http://www.dribo.eu>

ISO 9001  
ISO 14001  
BUREAU VERITAS  
Certification



## Compact switchgear D 1200 with H 27 load disconnectors



The compact, air insulated switchgear of D 1200 type meets the requirements of environmental friendly, maintenance free operation, with very limited space requirements. The switchgear system is equipped with switch disconnectors of long-term verified and maintenance-free design for a period of 10 years.

Usually the switchgear is supplied as „2+1“ and „3+1“, with fused switch disconnector mounted in the upper left cubicle. On request the customer can be supplied with a „mirror“ type switchboard design, with fused switch disconnector mounted in the upper right cubicle, or a „2+2“ design with two fused switch disconnectors in the upper part.

The switchgear is closed with doors from the front side, with inspection windows made of glued, multi-layer safety glass.

On the transformer side the switchgear cubicle is terminated with a cover, at a height of up to 1230 mm, made of steel sheets of 2 mm thickness. The opposite side of the frame is open and accommodates a power cable, which is led up to the switch disconnector mounted in the upper side. In order to close the side cable compartment the cubicle is provided with a cover of 140mm width. The top side of the frame is provided with a steel sheet (louvers) of 0.8 mm, to release the air overpressure.

The cable compartment is of open design, with the rear side open for access, and which can be covered on request.

In order to ensure an appropriate level of occupational safety each of the cubicles is equipped with guiding rails for drawing-in the insulation partitions into the disconnected path of the switch disconnector.

If there is a necessity to install the switchboard into the installation area the right side of the cubicle can be closed. The upper right-side cubicle is then to remain empty.

The both upper cubicles can be equipped with fused switch disconnectors or switch disconnectors at the outlet side. The lower cubicle can be equipped with switch disconnectors, only, for the connection of cable outlets.

Each of the four switch disconnectors installed, as well as the fused switch disconnectors, can be equipped with earthing switches having the short-circuit switching withstand capabilities.

Dimensions of the switchboard:  
width 1200 mm (+140 mm)  
depth 1100 mm  
height 2100 mm

The weight of the switchboard shown is approx. 480 kg.