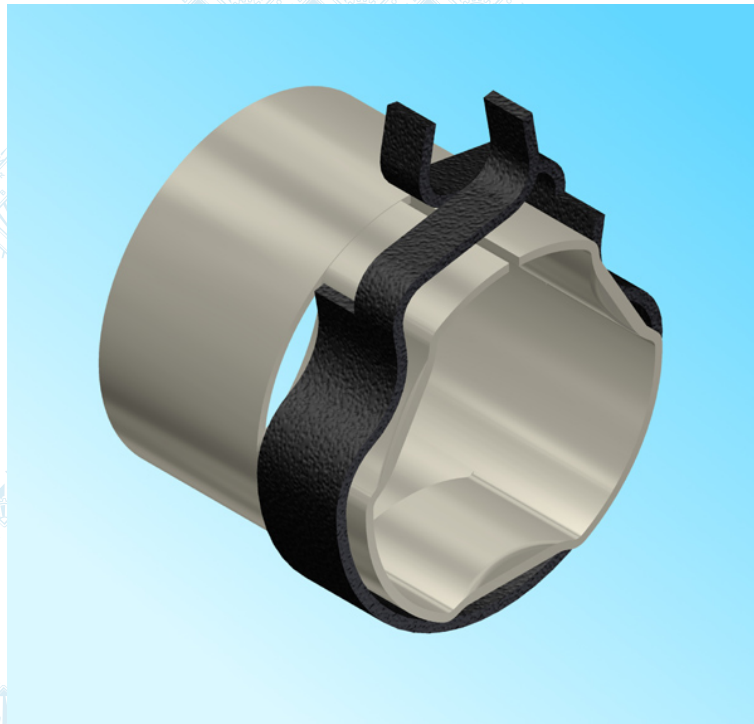


Fuse reduction adapters PRJ

for use on fuse-bases and switching devices
designed initially for J type fuses
rated voltage 12, 25 and 38.5 kV



DRIBO, spol. s r.o.

Pražákova 36
619 00 Brno
Czech Republic

Tel.: +420 533 101 111, Fax: +420 543 216 619, E-mail: dribo@dribo.cz, Internet: <http://www.dribo.eu>

ISO 9001
ISO 14001
BUREAU VERITAS
Certification



PRJ fuse reduction adapters

The fuse reduction adapters are manufactured in accordance with the requirements of EN 62271-1 standard.

The adapters are designed for the accommodation of fuse inserts connected in MV power circuits, for mounting on the existing fuse-bases, switch disconnectors or disconnectors.

One of advantages of the fuse reduction adapters is the possibility of using new type I fuses to EN 60282-1 standard, inserted in fuse-bases and apparatuses originally designed for J-type fuses, without the need of changes in their construction.

The fuse reduction adapters are intended for use on any type I fuses, as defined by the EN 60282-1 standard. These fuses have the contact part diameter identical for all the respective values of rated current, i.e. 45 mm. As for the J-type fuses, these have been split onto those with fuse bases designed for rated current up to 25 A, with contact diameter of 60 mm, and fuses rated above 30 A with contact diameter of 80 mm (see the corresponding table with J-type fuse dimensions).

The PRJ fuse reduction adapters are manufactured and offered in two product series – for the existing fuse-base contact diameter of 60 mm and 80 mm. Consequently, in devices designed originally for fuses with higher rated currents (i.e. with larger contact diameter) we can now utilize new types of fuses with lower rated current thanks to the fuse reductions.

The PRJ S fuse reduction adapters are equipped with an element serving to transfer the energy of fuse tripping pin, which can be used e.g. in the existing fused switch disconnectors.

The PRJ fuse reduction adapters are equipped with a pressure spring to ensure the high reliability of electric current transfer between the reduction adapter and the fuse.

The current-carrying part of the fuse reduction adapters is made from electroplated nickel-coated copper.

The steel pressure spring of the reduction adapters is protected from corrosion by the Delta Tone 9000 technology.

PRJ fuse reduction adapters – types description

Fuse reduction adapter type	Rated voltage [kV]	Diameter of fuse-base contact [mm]	Ordering number (set consisting of 2 pcs)
PRJ1 25	12 and 25	60	11102500
PRJ2 25	12 and 25	80	11202500
PRJ1 38	38.5	60	11103800
PRJ2 38	38.5	80	11203800
PRJ1 S 25	12 and 25	60	11102500S

Dimensions of contacts of the existing J-type fuses

Fuse type	Rated voltage of fuse [kV]	Fuse rated current [A]	Fuse contact diameter [mm]
J 12	12	2 to 25	60
J 12	12	30 to 100	80
J 25	25	2 to 25	60
J 25	25	30 to 100	80
J 38	38.5	2 to 25	60
J 38	38.5	30 to 100	60

PRJ fuse reduction adapters – assembly example

