

Indoor fuse bases

single- and three-pole design
rated voltage 12, 25 and 38.5 kV



DRIBO, spol. s r.o.

Pražákova 36
619 00 Brno
Czech Republic

Tel.: +420 533 101 111, Fax: +420 543 216 619, E-mail: dribo@dribo.cz, Internet: <http://www.dribo.eu>

ISO 9001
BUREAU VERITAS
Certification



Indoor fuse bases

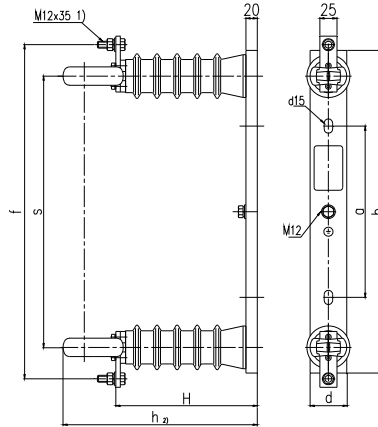
These meet the requirements of EN 62271-1 standard and are designed to accommodate fuse insert to EN 60 282-1, for current from 2 to 200 A, and for voltages of 12; 25 and 38.5 kV.

The advantages of the fuses are their small dimensions and low weight.

The three-pole fuse bases can be equipped with mechanism for remote indication of the fuse tripped state.

The fuse base is made of bent steel sheets, with hot galvanized surface.

Single-pole design

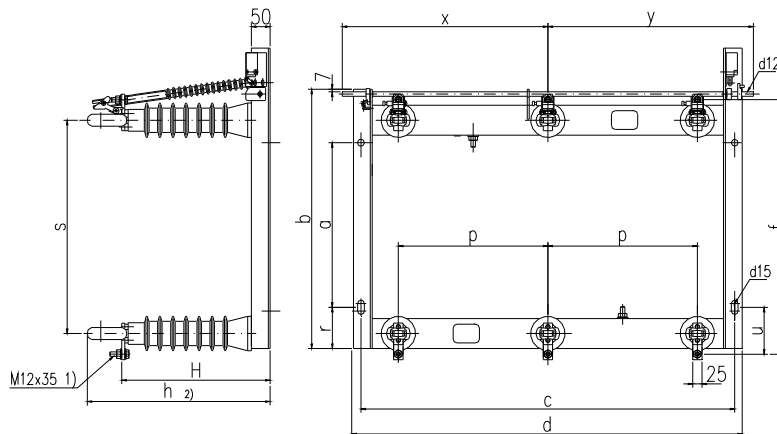


- 1) hexagonal screw with nut, shim and spring washer
 2) for highest fuse diameter of 88mm (to DIN 43625)

rated voltage kV	part nr.	a	b	d	f	h	H	s	weight kg
12	733 14000	180	405	64	435	267	167	325	3,5
25	733 24000	300	565	64	585	347	247	475	5,5
38,5	733 34000 *)	380	670	64	680	447	347	570	11,1

*) ceramic or epoxy resin insulators

Three-pole design



- 1) hexagonal screw with nut, shim and spring washer
 2) for highest fuse diameter of 88mm (to DIN 43625)

rated voltage kV	part nr.		a	b	c	d	f	h	H	p	r	s	u	x	y	weight kg
	w/o indication of the tripped state	with indication of the tripped state														
12	733 11000	-	280	428	600	640	435	297	197	210	52,5	325	77,5	-	-	15,5
12	-	733 12000	280	428	600	640	435	297	197	210	52,5	325	77,5	340	340	17,9
25	733 21000	-	350	598	750	790	585	377	277	275	102,5	475	117,5	-	-	26
25	-	733 22000	350	598	750	790	585	377	277	275	102,5	475	117,5	420	420	29
38,5	733 31000	-	440	695	1000	1040	680	467	397	400	100	570	115	-	-	40
38,5	-	733 32000	440	695	1000	1040	680	467	397	400	100	570	115	550	550	43,7

Specifications are subject to change without notice.

DRIBO 03/2011