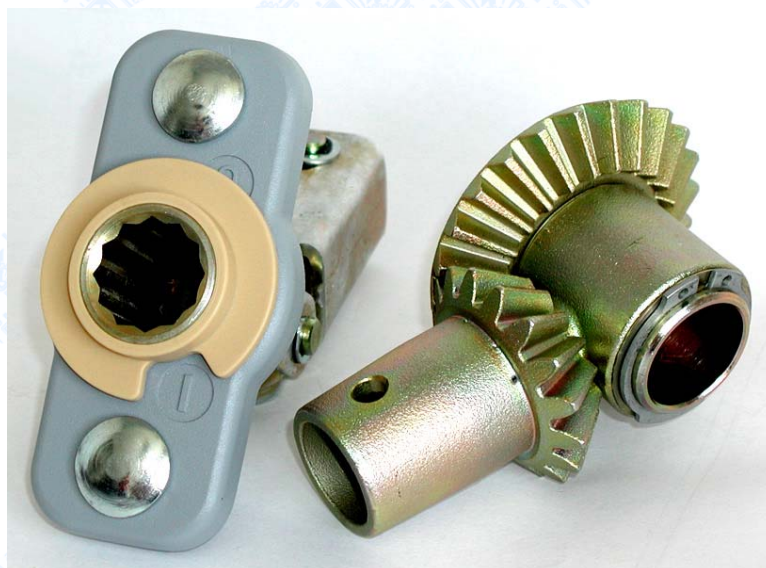


# Hand operated drives and accessories

for indoor switching devices



**DRIBO, spol. s r.o.**

Pražákova 36  
619 00 Brno  
Czech Republic

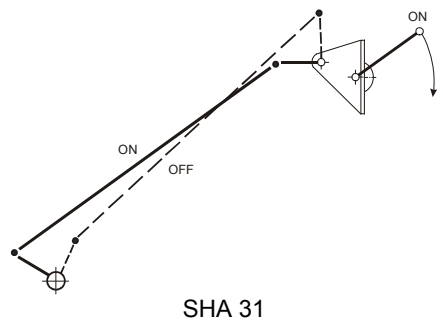
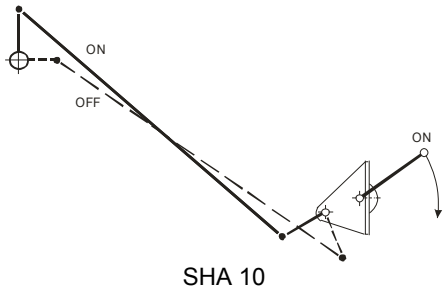
Tel.: +420 533 101 111, Fax: +420 543 216 619, E-mail: [dribo@dribo.cz](mailto:dribo@dribo.cz), Internet: <http://www.dribo.eu>

ISO 9001  
BUREAU VERITAS  
Certification

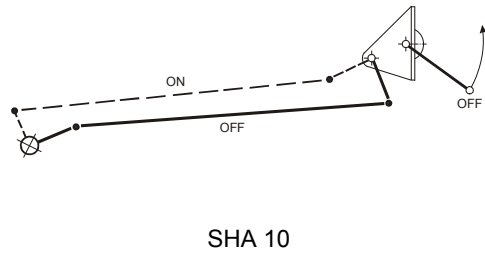
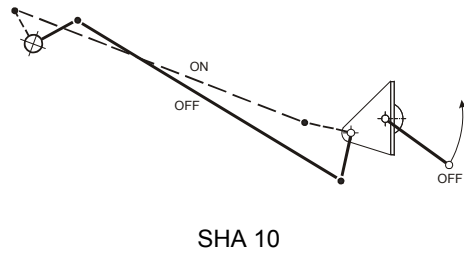




### Disconnecter and load disconnecter

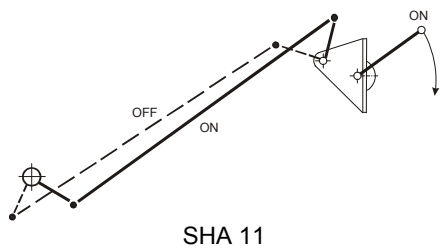
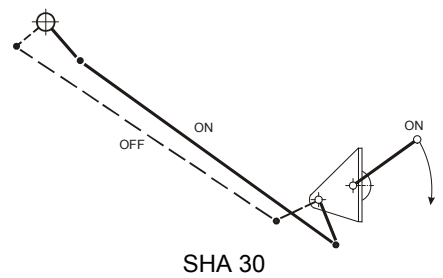


### Circuit breaker

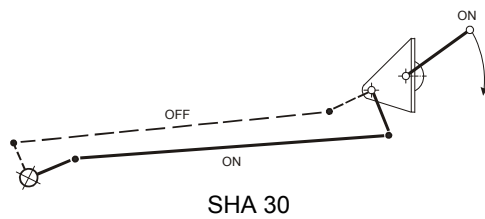
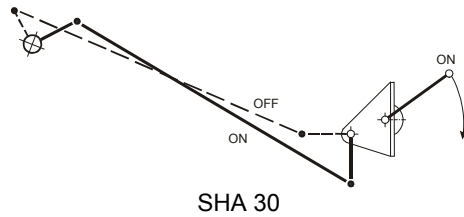


### Earthing switch

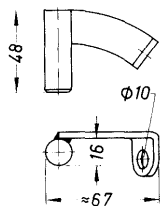
switching on from below towards the top



switching on from the top towards down



### Accessories to the SHA drives



#### Locking segment of the SHA drives

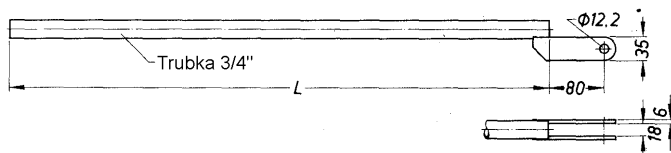
- steel - galvanized

Part Nr.	Weight approx. kg
641 09570	0.12

#### Earthing Cu coupler

- standard length 230 mm

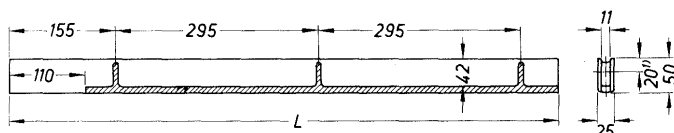
Part Nr.	Weight approx. kg
436 33065	0.04



### Linkage rod with forked cover plates

- painted steel
- the pull rod is delivered as a full-scale set, including the clamping rod head and clamping crank
- during the assembly the pull rod is shortened to desired length

Part Nr. of the set	L	Weight approx. kg
774 93500	1500	4.20
774 93501	2000	5.00
774 93502	2500	5.75
774 93503	3000	6.55



### Insulating rod made of GFK

- gray colour RAL 7030
- the pull rod is delivered as a full-scale set, including the clamping rod head, flat extension and bolt
- during the assembly the pull rod is shortened to desired length

Part Nr. of the set	L	Weight approx. kg
774 93260P	1080	3.50
774 93250P	1200	3.85
774 93255P	1600	4.40

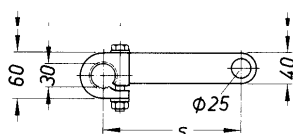


Fig. 1

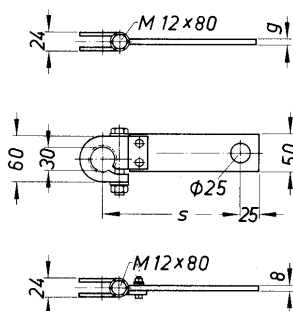


Fig. 2

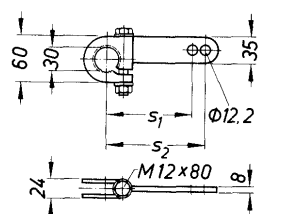


Fig. 1

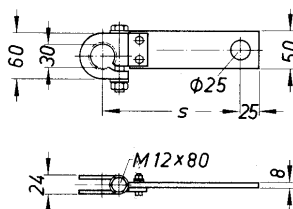


Fig. 2

### Pulling eye

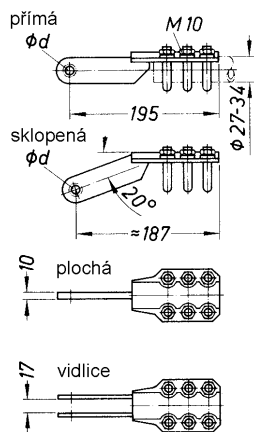
- for shaft diameter 30mm, with hardened inner gearing
- steel parts, except screws, washers and nuts are galvanized

Design	Fig. Nr.	Part Nr.	g	s	Weight approx. kg
steel lever	1	77411180	6	180	0.60
		77411245	6	245	0.73
		77411320	6	320	0.88
		77411500	8	500	1.49
insulated lever	2	77415180	-	180	0.60
		77415245	-	245	0.73
		77415320	-	320	0.87
		77415500	-	500	1.22

### Clamping crank

- for shaft diameter 30mm, with hardened inner gearing
- steel parts, except screws, washers and nuts are galvanized

Design	Fig. Nr.	Part Nr.	s <sub>1</sub>	s <sub>2</sub>	Weight approx. kg
crank lug in the middle of the clamping screw side	1	77411600	66	83	0.44
		77411601	83	100	0.48
		77411602	111	128	0.54
		77411603	158	175	0.65
crank lug lateral opposite the clamping screw side	2	77411700	-	60	0.39
		77411701	66	83	0.44
		77411702	83	100	0.48
		77411703	111	128	0.54

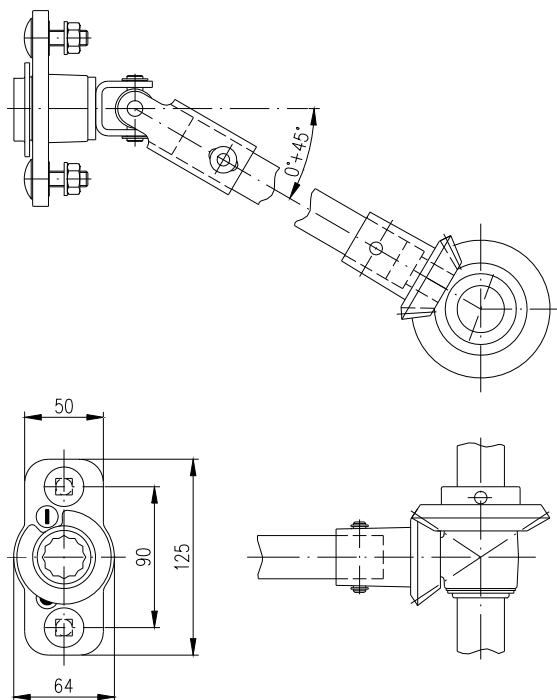


## Clamping rod heads

- steel - hot-galvanized

Type - figure	Part Nr.	$\phi d$	Weight approx. kg
straight, flat	775 71000	12.5	1.0
straight, flat with bearing bushing	775 71011	12.5	1.0
straight, fork	775 71200	12.5	1.1
cranked, flat	775 72000	12.5	1.0
cranked, fork	775 72200	12.5	1.1

## DK lever-type drives for switching devices operated from the cell front



This type of drive mechanism is used mostly for switching devices mounted to the rear of the cell. The DK drive is fixed to the front face of the cell.

The DK drive can be tilted in vertical direction to up to  $45^{\circ}$  as to the switching device's shaft. The shaft extension is used in case we need to eliminate the horizontal tilt.

Owing to its design the DK drive does not require practically no adjustment.

From the front the drive is fixed using two M10 bolts with nuts (which are a part of the delivery).

The drive unit is composed of the DK drive (with joint), a cone-type transmission (fixed by a pin to the switch's shaft), and connecting rod. The connecting rods are delivered in various lengths.

*Note: the items of the set are ordered separately.*

The drive is operated with a hexagonal head lever, and can be completed with a locking segment.

Item	Order Nr.	Weight approx. kg
<b>DK lever-type drive</b>	774 46010	1.00
<b>Cone transmission</b>	774 46020	1.23

## Accessories to the DK drives

### Interconnecting rod

- galvanized steel
- a pipe of  $\frac{3}{4}$ " dia, located close to the switching device (on the side of the angle transmission). Along approx. 600 mm the rod is provided with insulating sleeve
- during the assembly the rod is cut to the necessary length

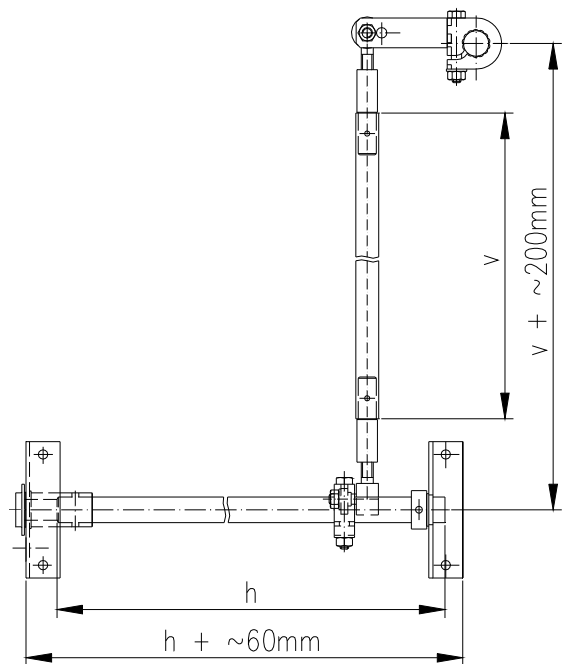
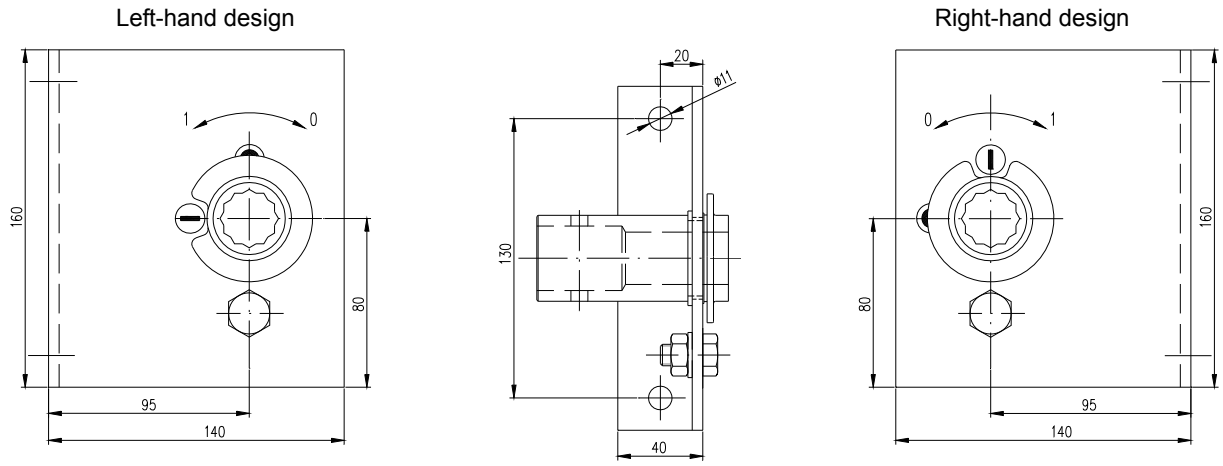
Part Nr.	L	Weight approx. kg
774 93600	1500	2.60
774 93601	2000	3.40
774 93602	2500	4.20
774 93603	3000	5.00

### Locking segment for the DK drive

- galvanized steel

Part Nr.	Weight approx. kg
611 23330	0.30

**DT lever-type drives for switching devices operated from the cell front**



These drives, in particular, are used for the actuation of switching devices mounted on the rear side of the switching cell. The actuating part of the DT drive is mounted on the switching cell's front side.

Both ends of the DT drive pull rod are provided with joints that make it possible to tilt out the rod from the vertical axis. In such a way the rod can connect two square shafts (i.e. the shaft extension and the switching device's shaft in case of the DT drive). This design provides for high variability of mounting, and the connecting rod mounting place can be chosen later on, depending on the actual situation in the switching cell.

The actuating part of the drive is either welded on to the switching cell structure, or fixed using screws.

The drive assembly consists of the actuating part of the DT drive, shaft extension with bearing, and a rod with joints and clamping levers. The shafts of both the drive and the rod are delivered in various lengths.

*Note: The items of the drive assembly are to be ordered separately.*

The drive is operated using a lever with hexagonal ending. It may be completed with a locking segment.

Item	Part Nr.	Weight approx. kg
DT control section – left	774407138L	1,40
DT control section – right	774407138P	1,40

**Accessories to the DT drives**

**DT drive shaft extension, inclusive of bearing**

- galvanized steel material
- the extension part is cut-to-measure during the assembly

Ordering number	Length – dimension h	Weight approx. kg
77490100	1000	4,30
77490101	1500	5,10
77490102	2000	5,90

**DT drive-pull rod with joins and clamping levers**

- galvanized steel material
- the extension part is cut-to-measure during the assembly

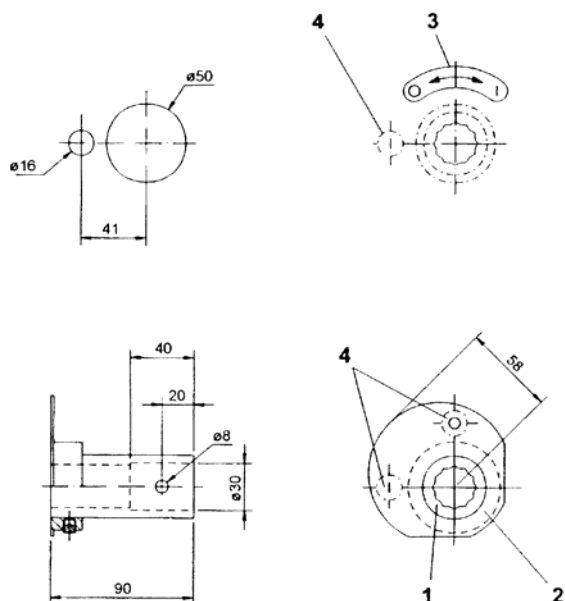
Ordering number	Length – dimension v	Weight approx. kg
77493701	2000	4,10
77493702	2500	4,90
77493703	3000	5,70

**DT drive locking segment**

- galvanized steel material

Ordering number	Weight approx. kg
611 23330	0,30

## End piece of the D drive – for lateral mounting



The D drive end piece is used for switching devices mounted on the switching cell side wall. The end piece is attached directly to the end of the shaft.

The drive set consists of the following parts:

- 1 the D drive end piece with internal dodecagon,
- 2 slide-on level indicator,
- 3 self-adhesive sticker to indicate the direction of movement OFF↔ON, or ON↔OFF,
- 4 self-adhesive stickers with OFF and ON inscription.

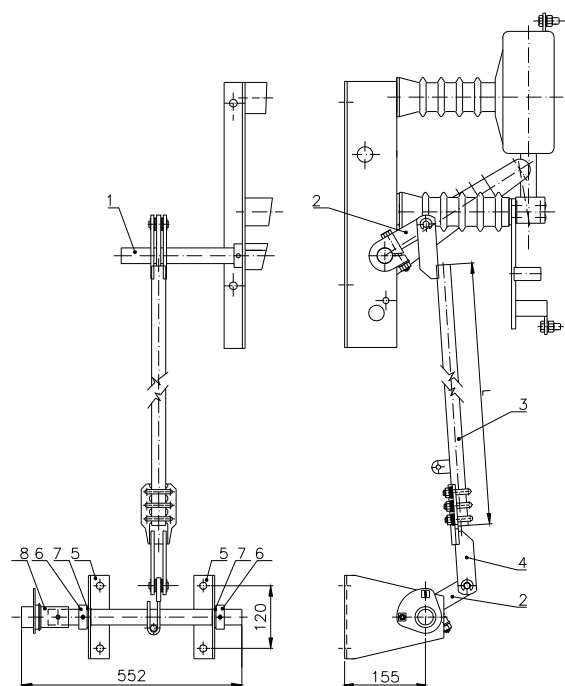
*Note: the items of the set are ordered separately.*

In case of necessity the shaft can be extended by an extension piece.

Drive is handled by plug-in lever with hexagon attachment. On request the drive can be completed with a locking segment.

Item	Part Nr.
End piece for the D drive	641 30560
Slide-on level indicator	536.144
OFF-ON (0↔1) sticker	520.033
ON-OFF (1↔0) sticker	520.034
OFF (0) sticker	520.031
ON (1) sticker	520.032

## D drive for switching devices located at a height – lateral mounting



The D drive is being used for switching devices attached to the switching cell side wall, installed at higher level which makes it impossible to operate the switching device straight on by using the end piece for the shaft's D drive.

The drive set consists of the following parts:

- 1 switch disconnecter shaft,
- 2 clamping lever,
- 3 pull rod with fork-type end piece,
- 4 clamping end piece, straight shape, fork-type design,
- 5 holder with sleeve,
- 6 adjusting ring,
- 7 washer,
- 8 end piece for the D drive.

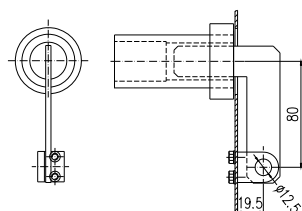
*Note: the items of the set are ordered as a unit.*

Drive is handled by plug-in lever with hexagon attachment. Parts of the delivery are self-adhesive stickers with the ON or OFF inscription, and to show the movement direction OFF↔ON, ON↔OFF.

The controlling pull rod has a length of  $l = 1500$  mm. Another pull rod length can be supplied on request.

**Set order number: 774 05264.**

## Accessories to the D drives – lateral mounting



### Locking segment for D drive

- galvanized steel

Part Nr.	Weight approx. kg
611 23320	0.23

## Accessories to drives and switching devices



Fig. 1

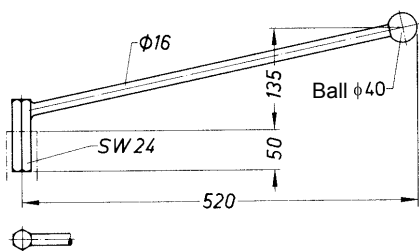
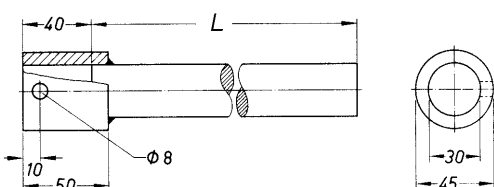


Fig. 2

### Control levers

- galvanized steel

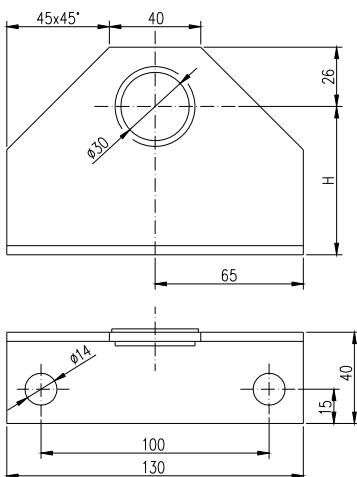
Design	Fig.	Part Nr.	L	Weight approx. kg
straight – for lever operated SHA type drives	1	774	365 – earth switch	0.60
		91350	515 – disconnector	0.85
		91500		
with hexagon – for D and DK drives	2	774 92500	-	1.30



### Shaft extension piece

- galvanized steel

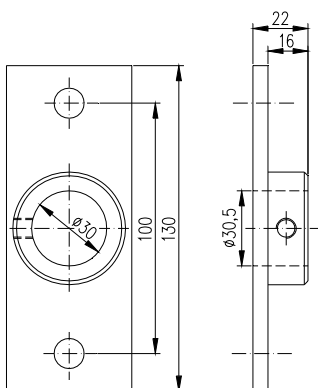
Part Nr.	L	Weight approx. kg
641 09069	200	1.45
641 09070	500	3.10
641 09071	1000	5.80



### Bearing pedestal for shaft extension $\phi$ 30mm

- galvanized steel
- used to extensions with lengths of more than 200 mm

Design/use	Part Nr.	H mm	Weight approx. kg
switch disconnectors, earthing switch H 27 SEA	40 5254S1	77	0.5
earthing switches	40 5254S2	65	0.4
earthing switches H 27 EK, EA	40 5254S3	61	0.4



### End bearing pedestal for shaft extension $\phi$ 30mm

- galvanized steel
- used to extensions with lengths of more than 200 mm

Part Nr.	Weight approx. kg
641 37120	0.4