

Motor operated drives SPN2

for use on indoor switching devices
for mounting on the front side of the cell



DRIBO, spol. s r.o.

Pražákova 36
619 00 Brno
Czech Republic

Tel.: +420 533 101 111, Fax: +420 543 216 619, E-mail: dribo@dribo.cz, Internet: <http://www.dribo.eu>

ISO 9001
BUREAU VERITAS
Certification



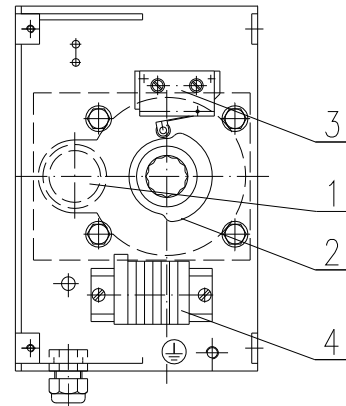
SPN2 motor operated drives of indoor design

The drives serve to actuate MV disconnectors and switch disconnectors for indoor use

- high level of output torque (400 Nm)
- easy assembly
- particularly convenient for to be mounted on existing switching devices at a later date
- compact design – only a small installation place required
- for mounting on the front side of switching cell
- integrated manual operation in emergency situations using a hexagonal-shaped ending

Basic structural parts of the drive mechanism

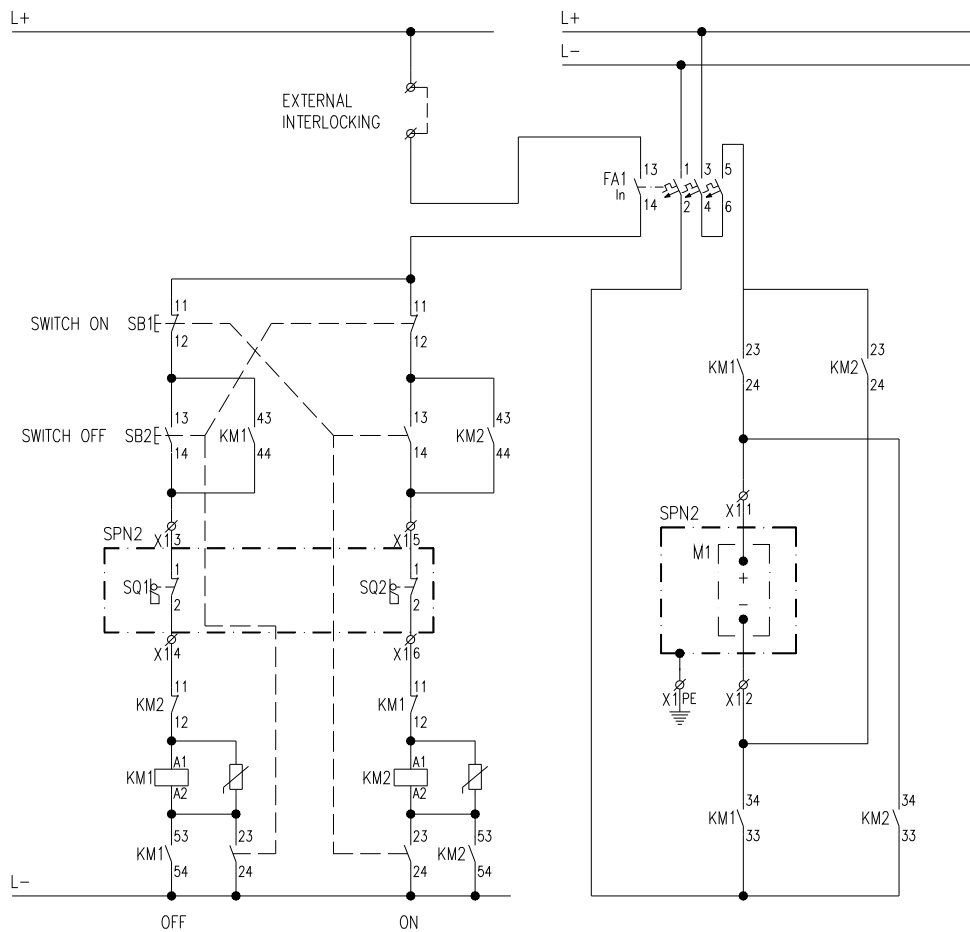
- 1 motor, SPN2 type
- 2 limit position cams, adjustable
- 3 limit position switches
- 4 terminal board to connect the drive



Technical data

Voltage	V	DC				AC
		24	60	110	220	230
power	W	50	50	50	50	50
rated current	A	4,5	2,1	1,2	0,7	0,85
circuit breaker range	A	4-6,3	1,6-2,5	1-1,6	0,63-1	0,63-1
circuit breaker setup	A	4,5	2,1	1,2	0,7	0,85

Recommended circuit diagram



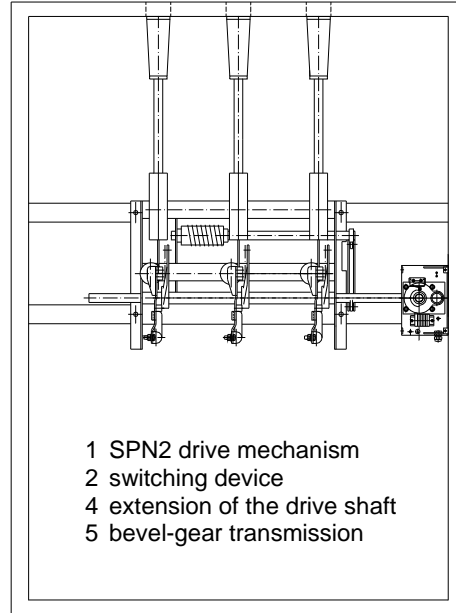
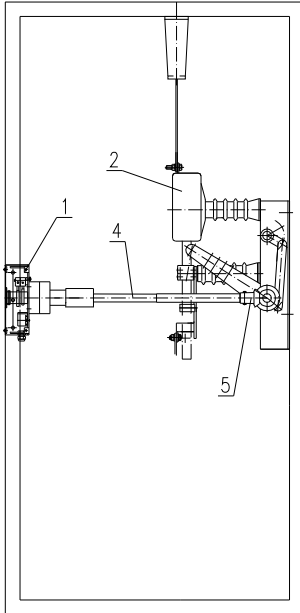
The circuit diagram shown applies for DC operated drives.

Drives for AC voltage must be completed with a rectifier (part of the delivery).

Application possibilities of the SPN2 drive

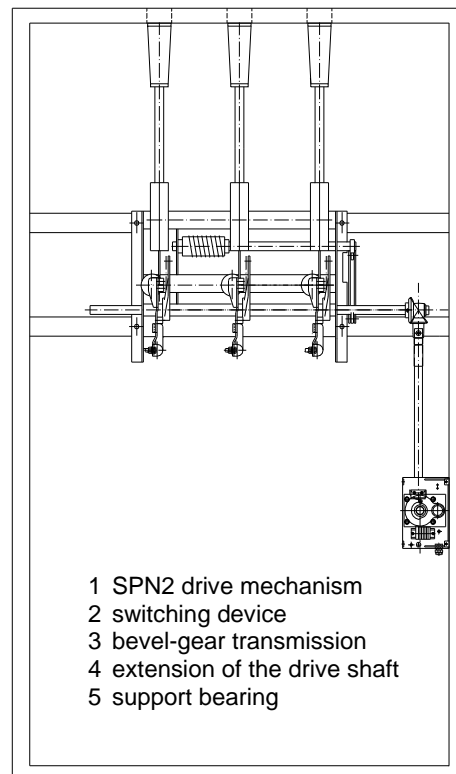
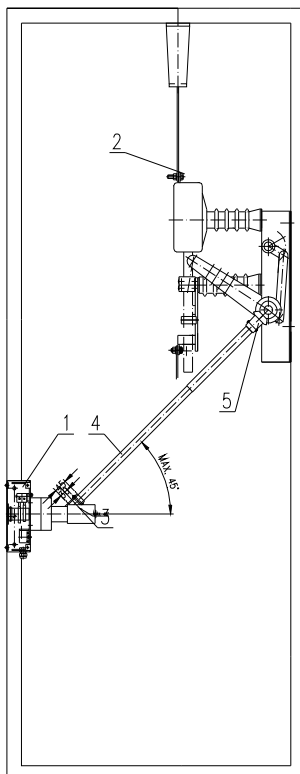
Direct interconnection between the drive and the switch shaft

- arrangement suitable for designs in which the drive is installed at the same level as the shaft of device
- for use in retrofitted switchgear cabinets of RS06, S11 type
- the SPN2 drive assembly consists of the actuating part, a bevel-gear transmission and connecting rod
- designed for mounting on either left-hand or right-hand side
- connecting rods manufactured and delivered in various lengths



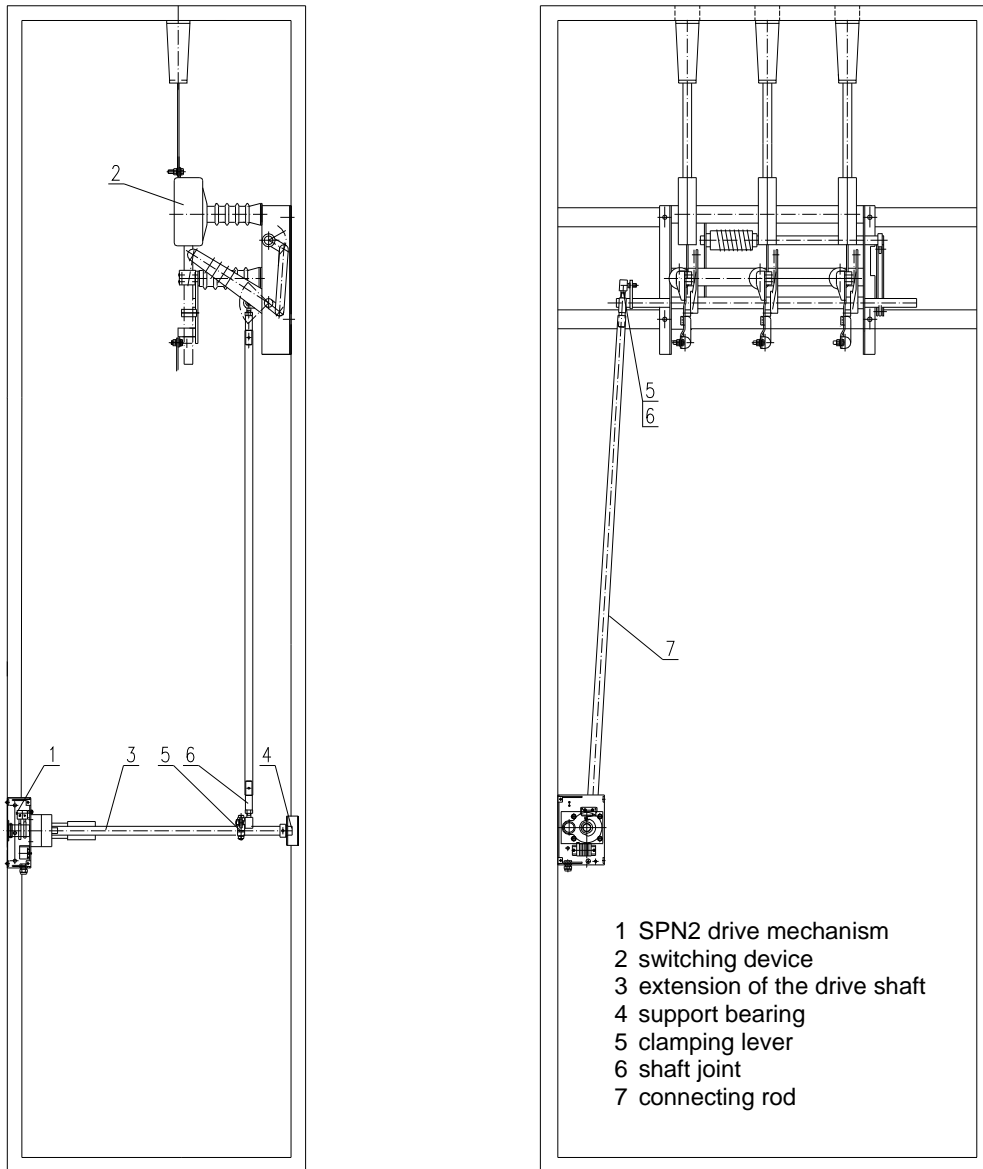
Direct mechanical connection – design with shaft joint – SPN2-K

- for use in switching cells or switchgear cubicles; the drive and the shaft need not to be at the same level
- the joint provides for vertical tilt of the drive against the switching shaft of up to 45°
- the assembly consists of the SPN2 shaft, i.e. the actuating part with joint, bevel-gear transmission and connecting rod
- designed for mounting on either left-hand or right-hand side
- connecting rods manufactured and delivered in various lengths



Mechanical connection of drive and shaft using the connecting rod – SPN2-T

- suitable for use in switching cells in which the switching devices are mounted at a far higher level as the drive itself
- for use in situations in which it is not possible to use the rotating rod or a drive with joint for the SPN2 drive assembly
- the drive assembly consisting of the SPN2 drive, i.e. the actuating part, drive shaft extension with an auxiliary bearing, and connecting rod with clamping end parts to connect with the switching device
- designed for mounting on either left-hand or right-hand side
- connecting rods manufactured and delivered in various lengths



Terminal board of the drive assembly

Terminal	Description
1	motor
2	OFF end switch (SQ1)
3	ON end switch (SQ2)
4	
5	
6	
PE	earthing

