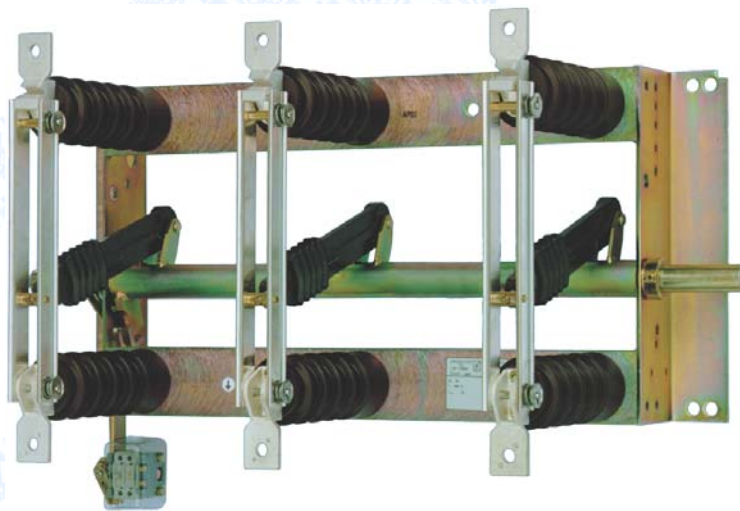


Indoor disconnectors

single- and three-pole design
rated voltage 12, 25 and 38.5 kV
rated current 630, 1250 up to 2500 A



DRIBO, spol. s r.o.

Pražákova 36
619 00 Brno
Czech Republic

Tel.: +420 533 101 111, Fax: +420 543 216 619, E-mail: dribo@dribo.cz, Internet: <http://www.dribo.eu>

ISO 9001
BUREAU VERITAS
Certification



Indoor disconnectors

Disconnectors as shown in the data sheet are intended to be used for no-load medium voltage devices.

The disconnectors meet the requirements of the EN 62271-1, EN 62271-102, EN 60265-1 standards.

All parts and frames made of steel are galvanized and chromate coated.

The drive shafts are seated in bronze bearings and this is why the material as such cannot be subjected to corrosion.

All parts of the current carrying path are made of drawn electrolytical copper and are silver coated (10 µm coat).

The corrosion-free compression springs supply an adequate pressure for the operation of making contacts.

The built-in earthing switches comply with the requirements of short-circuit making capabilities.

Under normal operating conditions the disconnectors are maintenance-free, with the first maintenance free period of 10 years.

The control of disconnectors occurs through the following:

- SHA hand operated drives (for disconnectors mounted on the front wall), with the possibility of both right-side and left-side mounting to the disconnector
- adaptor for „D“ type drive, with an extension part (in case of necessity, for disconnectors mounted to the side wall)
- UM50 motor operated drives (mounted directly to the operating shaft of disconnector, usually installed on the left side)
- UM10, UM20 or UM30 motor operated drives (control and manipulation from the front side of cubicle)

In case when the disconnector is equipped with earthing switch there is to be additional drive mechanism to provide for the control of the earthing switch.

Technical data

Rated voltage kV	Rated current A	Rated short-time current $I_k^{(1)}$ in kA	Rated peak withstand current I_p v kA
12	630	30	75
	1250	31,5	80
	1600	40	100
	2500	40	100
25	630	20	50
	1250	31,5	80
	1600	31,5	80
	2500	40	100
38,5	630	20	50

¹⁾ For loading times t between 1 and 5 seconds the 1-second short-time current is to be multiplied by $\frac{1}{\sqrt{t}}$

The disconnectors can also be delivered for higher current levels, on request.

Insulator levels to ČSN 35 4205

rated voltage	kV	12	25	38,5
rated short-time withstand power frequency voltage / 1min.				
against the earth, across the poles and between disconnected contacts	kV	28	50	80
across the isolating distance	kV	32	60	90
rated lightning pulse withstand voltage				
against the earth, across the poles and between disconnected contacts	kV	75	125	180
across the isolating distance	kV	85	145	210

Supplementary material to the disconnectors

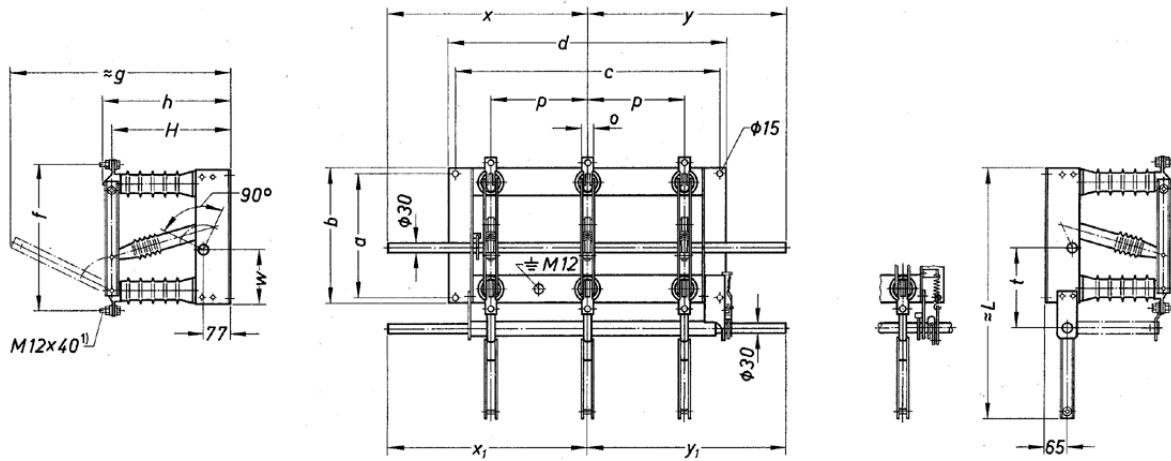
Additional switch - used for disconnectors without earthing switches, with a highest number of 16 contacts
In order to indicate the switching position the disconnectors with built-in earthing switches can be equipped with additional switches. The basic setup of switches can be modified without the necessity to disassemble the disconnector, by using special tools (such as when changing the contacts from making to breaking, or changeover contact etc.).

Interlocking magnet - 24 V, 60 V, 110 V and 220 V DC or 110 V and 230 V AC

Motor operated drive - see drives catalogue

Requests on disconnectors for horizontal assembly please notify in order.

Three-pole indoor disconnectors 13300, rated current 630 A



¹) hexagon head screw with nut, washer and spring washer

without earthing switch

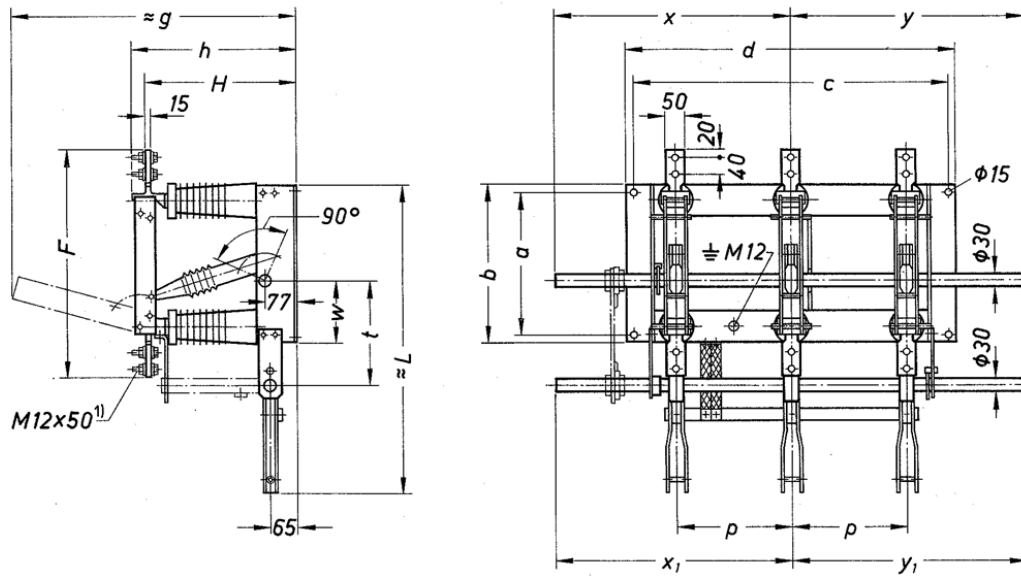
U [kV]	I _r [A]	part no.	a	b	c	d	f	≈ g	h	H	o	p	w	x	y	weight [kg]
12	630	731 41000	280	310	600	630	370	454	275	255	40	210	115	450	450	23,5
25	630	731 51000	350	380	750	790	420	619	355	335	40	275	155	565	565	33,5
38,5	630	731 69000	450	500	1000	1040	555	910	495	475	40	400	195	775	775	60,0

with earthing switch with short-circuit making capability mounted below - UESV with earthing switch mounted below - UEV

U [kV]	I _r [A]	part no.		≈ L	t		x ₁	y ₁	weight [kg]
		UESV	UEV						
12	630	731 41014	-	566	195	for missing measures see table above	450	450	32,5
25	630	731 51014	-	706	225		565	565	49,5
38,5	630	731 69014	731 69002	926	255		775	775	81,0

Earthing switch mounted above (OESV or OEV) on request.

Three-pole indoor disconnectors 13300, rated current 1250 A



¹⁾ hexagon head screw with nut, washer and spring washer

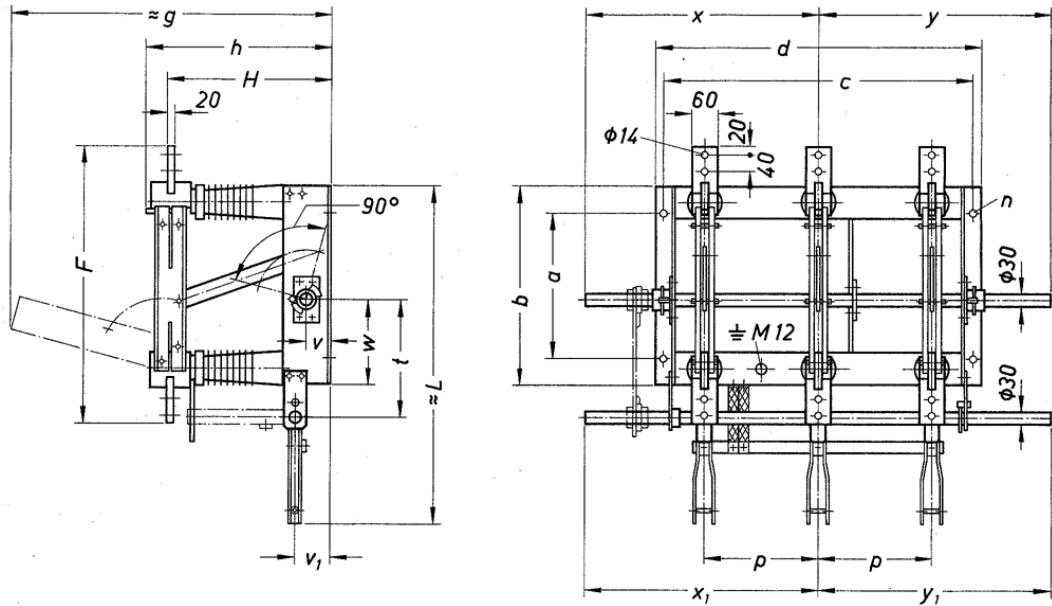
without earthing switch

U [kV]	I _r [A]	part nr.	a	b	c	d	F	$\approx g$	h	H	p	w	x	y	weight [kg]
12	1250	731 71000	280	310	600	640	490	525	315	286	210	115	450	450	65
25	1250	731 81000	350	380	750	790	550	680	395	366	275	155	565	565	71
38,5	1250	731 91000	450	500	1000	1040	640	885	505	476	400	195	775	775	79

with earthing switch with short-circuit making capability mounted below - UESV

U [kV]	I _r [A]	part nr.	$\approx L$	t		x ₁	y ₁	weight [kg]
12	1250	731 71001	566	210	for missing measures see table above	450	450	76
25	1250	731 81001	566	250		565	565	82
38,5	1250	731 91001	566	275		775	565	91

Three-pole indoor disconnectors, rated current 1600 A



without earthing switch

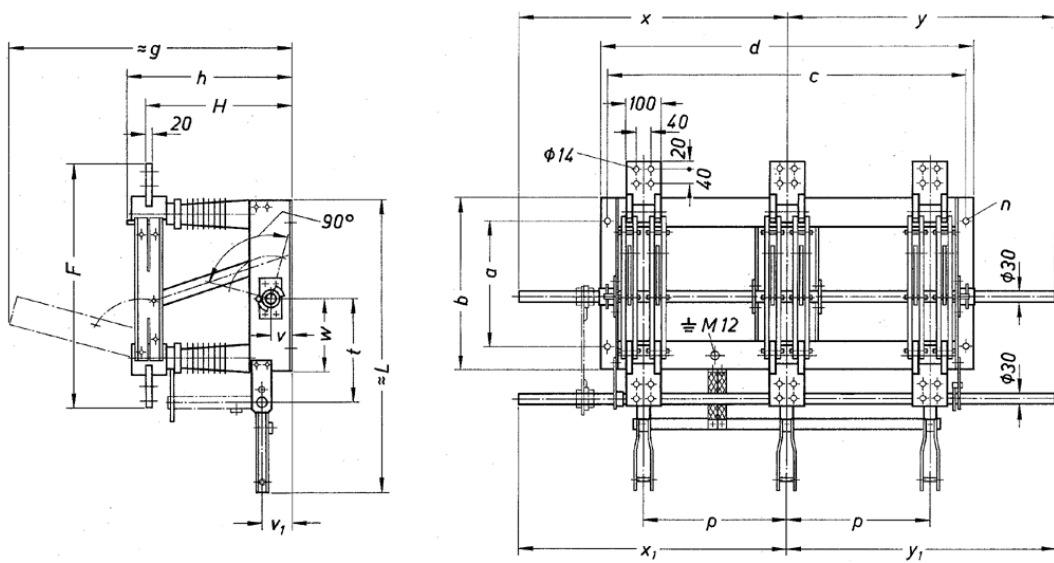
U [kV]	I _r [A]	part nr.	a	b	c	d	F	$\approx g$	h	H	ϕ	n	p	v	w	x	y	weight [kg]
12	1600	736 12000	280	400	600	640	590	575	350	300	15	210	60	160	450	450	81	
25	1600	736 22000	350	480	750	790	670	760	450	400	19	275	60	205	565	565	91	
38,5	1600	736 32000	450	600	1000	1040	770	1000	580	530	19	400	80	245	750	750	103	

with earthing switch with short-circuit making capability mounted below - UESV

U [kV]	I _r [A]	part nr.	$\approx L$	t	v ₁	x ₁	y ₁	weight [kg]
12	1600	736 12001	660	240	65	450	450	92
25	1600	736 22001	820	285	85	565	565	103
38,5	1600	731 32001	1040	315	105	750	750	125

for missing measures see table above

Three-pole indoor disconnectors, rated current 2500 A



without earthing switch

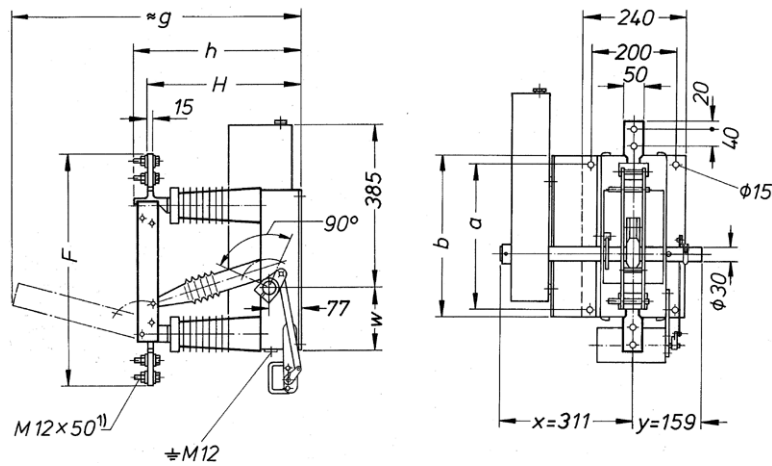
U [kV]	I _r [A]	part nr.	a	b	c	d	F	≈ g	h	H	φ n	p	v	w	x	y	weight [kg]
12	2500	736 13000	280	400	750	790	600	585	360	310	15	275	60	160	565	565	113
25	2500	736 23000	350	480	1000	1040	680	770	460	410	19	400	60	205	750	750	122
38,5	2500	736 33000	450	600	1200	1240	780	1010	590	540	19	500	80	245	850	850	131

with earthing switch with short-circuit making capability mounted below - UESV

U [kV]	I _r [A]	part nr.	≈ L	t	v ₁	x ₁	y ₁	weight [kg]
12	2500	736 13001	660	240	65	565	565	123
25	2500	736 23001	820	285	85	750	750	132
38,5	2500	731 33001	1040	315	105	850	850	141

for missing measures see table above

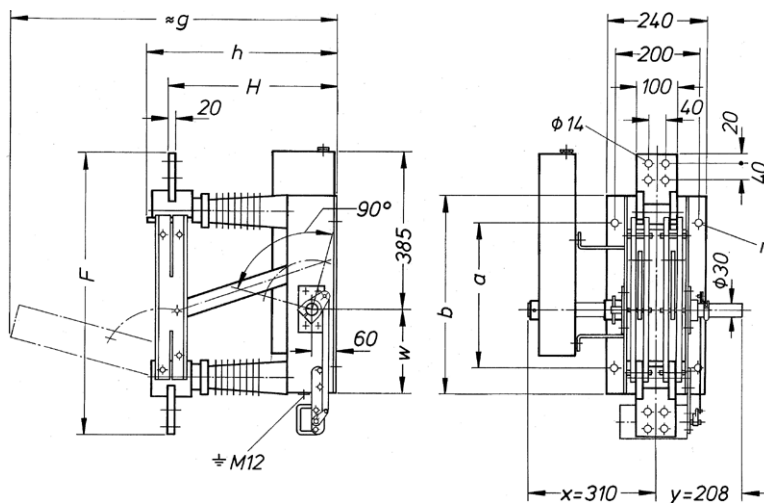
Single-pole indoor disconnectors, rated current 1250 A



¹⁾ hexagon head screw with nut, washer and spring washer

U [kV]	I _r [A]	part nr.	a	b	F	≈g	h	H	w	weight [kg]
12	1250		280	310	490	525	315	286	115	
25	1250	731 89000	350	380	550	680	395	366	155	35

Single-pole indoor disconnectors, rated current 2500 A



U [kV]	I _r [A]	part nr.	a	b	F	≈g	h	H	φ n	w	weight [kg]
12	2500	736 63005	280	400	600	585	360	310	15	160	38
25	2500	736 73000	350	480	680	770	460	410	19	205	53