

Outdoor load disconnectors DRIBO F1c GB R

three-pole design
rated voltage 25 and 38.5 kV
rated current 400 and 630 A



DRIBO, spol. s r.o.

Pražákova 36
619 00 Brno
Czech Republic

Tel.: +420 533 101 111, Fax: +420 543 216 619, E-mail: dribo@dribo.cz, Internet: <http://www.dribo.eu>

ISO 9001
BUREAU VERITAS
Certification



DRIBO FIC GB R outdoor load disconnectors

The breaking operation at the DRIBO FIC GB load disconnectors uses the energy of spring-based arch quenching mechanism. The arc-free tripping makes it possible to mount the device below the power line.

One of the advantages of this series of load disconnectors is the possibility of their mounting under voltage, the easy and quick assembly of the overvoltage limiters, the simplified mounting on the pole and easy handling of the switching device due to its reduced weight.

The DRIBO FIC GB R load disconnectors are general-purpose switching devices, intended for installation on the top of pole, at branch-offs or for mounting below the power line.

The load disconnectors comply with the requirements of the following standards: EN 62271-1, EN 60265-1. The supporting insulators used satisfy to specification of pollution degree IV, as defined by the ČSN 33 0405 standard.

The welded base frame is made of steel profiles, protected against corrosion by hot galvanization. Hot galvanization is also used to protect the shafts of the load disconnector, seated in bronze bearings, as well as all other steel parts including the accessories.

The cross-section of the conductors leading to the current-carrying parts is adequate to the loads the load disconnector has to withstand.

All current-carrying parts of the load disconnector are made of electroplated silver-coated copper, featuring a loop-less current-carrying path.

The insulating supports, delivered together with the load disconnector, are made of cycloaliphatic resin.

The load disconnectors can be controlled either by manually operated drive mechanisms or remote controlled motor driven drives in outdoor design.

The load disconnectors can also be provided with encapsulated auxiliary switches (IP 44 protection degree), mounted straight on onto the frame. The auxiliary switches provide for a reliable indication of the closed and opened switching position.

The short-circuit capacity of the load disconnector is met with a high reserve.

The construction of the load disconnectors, the quality level of material used and care exercised in the production process, which is governed by the principles of the ISO 9001:2000 standard, is a guarantee for low operation and maintenance costs in the future.

Under normal operating conditions it is not necessary for the load disconnectors to undergo a preventive maintenance during the period of twenty years.

DRIBO FIC GB R load disconnectors

Nomenclature	Verbal description of the apparatus	Rated voltage U _r kV	Pole height m	Ordering number	Approx. weight in kg
DRIBO FIC GB R	load disconnector for mounting on a concrete pole, on top / branching / below the power line	25	-	01000005R	70
DRIBO FIC GB R	load disconnector for mounting on a concrete pole, on top / branching / below the power line	38,5	-	03000005R	88
Set – top mounting	set consisting of drive mechanism and accessories, for mounting the load disconnector onto a pole top	25	10,5 12	00121005V 00121205V	39,6 42,7
		38,5	10,5 12	00131005V 00131205V	40,1 43,2
Set for branching-off	set consisting of drive mechanism and accessories, for mounting the load disconnector into a branch line	25	10,5 12	00121005O 00121205O	38,1 41,2
		38,5	10,5 12	00131005O 00131205O	38,6 41,7
Set for mounting below power line	drive mechanism for the DRIBO FIC GB R load disconnector, for mounting below the power line	-	10,5 12	00001005P 00001205P	29,1 36,6

The set for top mounting (consisting of drive mechanism and accessories for mounting the load disconnector on the pole top) includes the following:

- sleeves for fixing the apparatus on concrete single-pole (designed for pole top)
- band-type inlets
- fork-type drawbars with guides (GB R)
- suspensions for strain insulators (6 pcs)
- complete drive mechanism for mounting on the concrete single-pole of 10.5 m or 12 m height (for load disconnector mounted on the pole top)

The set for branching-off (consisting of drive mechanism and accessories for mounting the load disconnector into the branch line) includes the following:

- sleeves for fixing the apparatus on concrete single-pole
- band-type inlets
- fork-type drawbars with guides (GB R)

- suspensions for strain insulators (3 pcs)
- complete drive mechanism for mounting on the concrete single-pole of 10.5 m or 12 m height (for load disconnector mounted below the power line)

The set for mounting below the power line (consisting of drive mechanism) includes the following:

- sleeves for fixing the apparatus on concrete single-pole
- complete drive mechanism for mounting on the concrete single-pole of 10.5 m or 12 m height (for load disconnector mounted below the power line)

The sets for mounting onto the pole top and into the branch line do include accessories for rated currents of up to 400 A. Accessories rated for 630 A is supplied on request.

Technical data

Rated voltage	U_r	kV	25	38.5
rated current	I _r	A ¹⁾	400	400
rated short-time withstand current	I _k	kA	20	20
rated peak withstand current	I _p	kA	50	50
rated short-circuit making current	I _{ma}	kA ²⁾	10	10
rated breaking current - I cos φ 0.7, ind.	I _l	A	35	18
rated breaking current of closed loop	I _{2a}	A	20	18
rated breaking current of no-load transformer	I ₃	A	8	4
rated breaking current of no-load cable	I _{4a}	A	16	15
rated breaking current of no-load power line	I _{4b}	A	16	15
rated earth fault off-load breaking current	I _{6a}	A	50	36
rated cable charging breaking current below earth fault conditions	I _{6b}	A	21	18

Switching-off is not dependent on control speed.

¹⁾ The 400 A and 630 A switching devices differ only in the accessories supplied. By default the accessories is rated for 400 A; accessories for 630 A is delivered on request.

²⁾ For adequately quick manual operation

Withstand voltages of DRIBO F1c GB load disconnectors

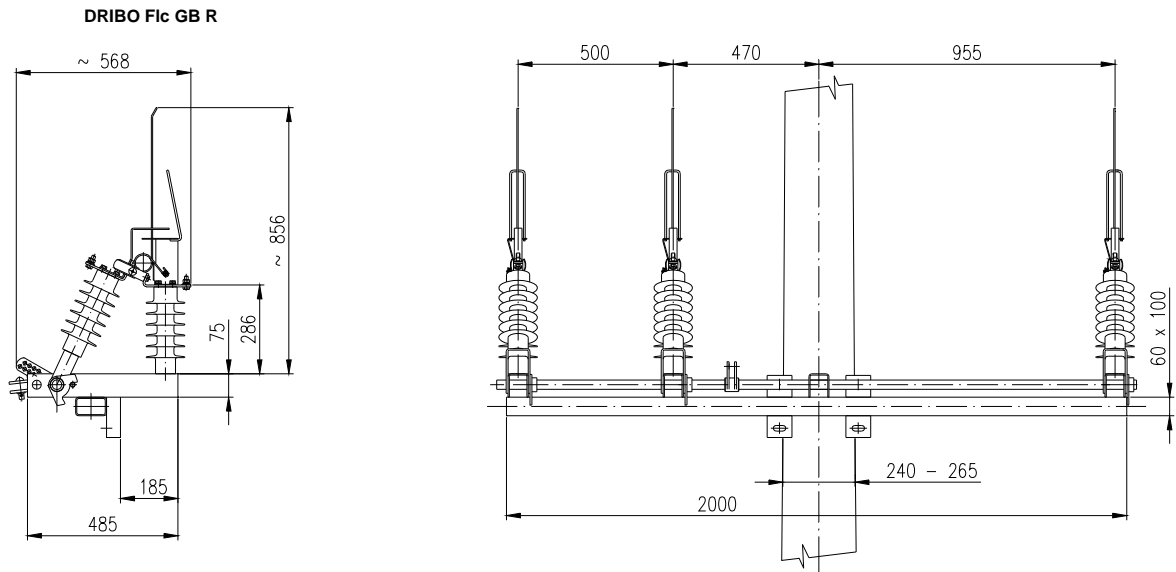
rated voltage	kV	25	38.5
rated short-time withstand power frequency voltage / 1min. to be applied in both dry and wet environmental conditions			
against the earth, across the poles and between disconnected contacts	kV	50	80
across the isolating distance	kV	60	90
rated lightning pulse withstand voltage			
against the earth, across the poles and between disconnected contacts	kV	125	180
across the isolating distance	kV	145	210

Climatic conditions

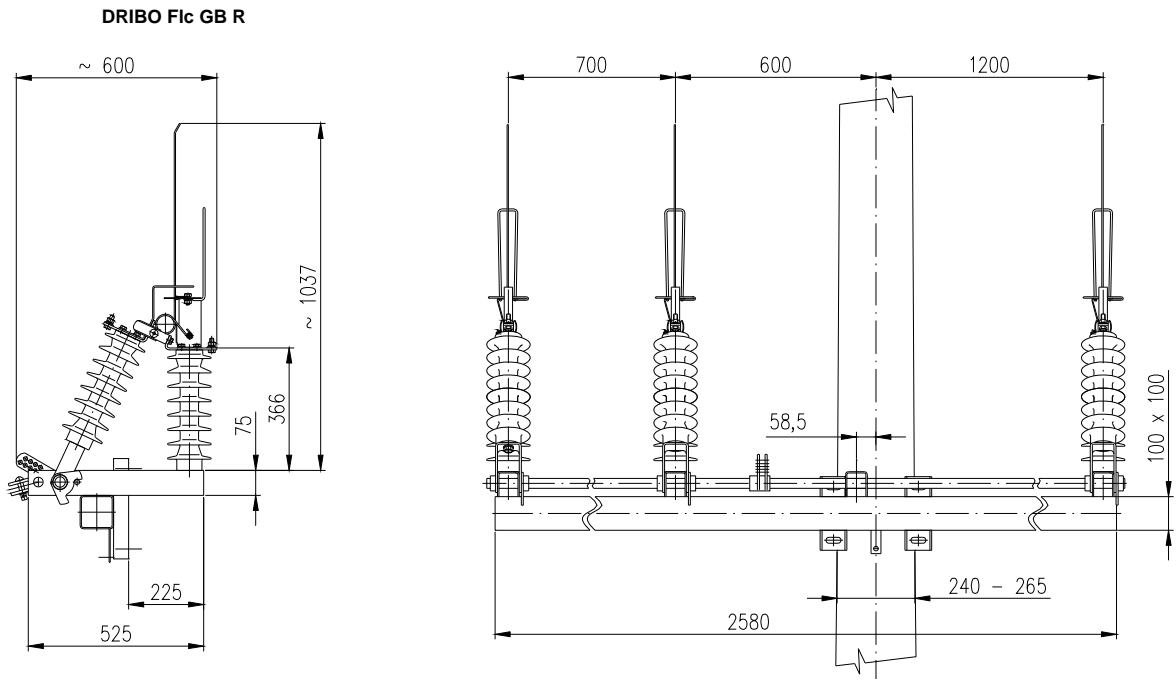
highest temperature	°C	+ 40
lowest temperature	°C	- 30
highest relative humidity	%	100
highest wind pressure	Pa (m/s)	700 (34)
typical altitude	m a. s.	up to 1000

Usages in higher altitudes please consult with producer.

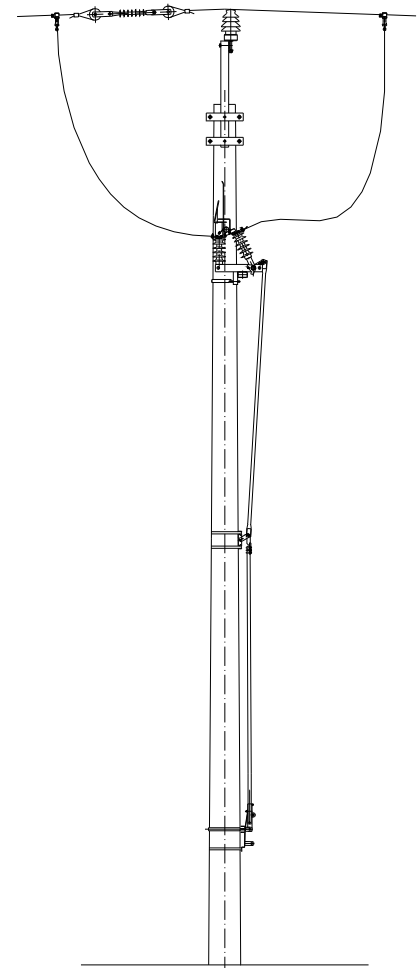
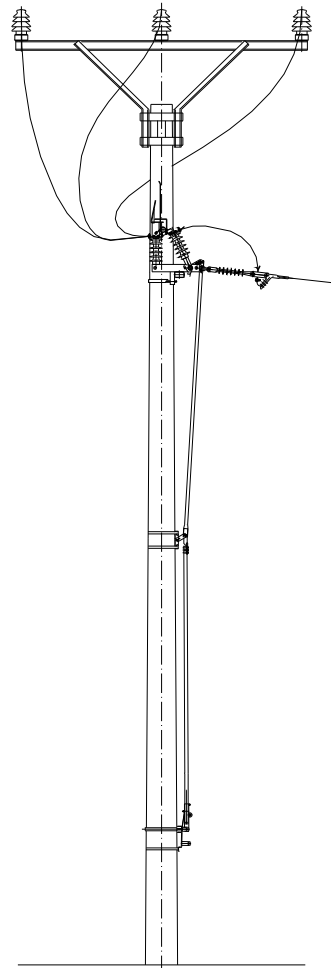
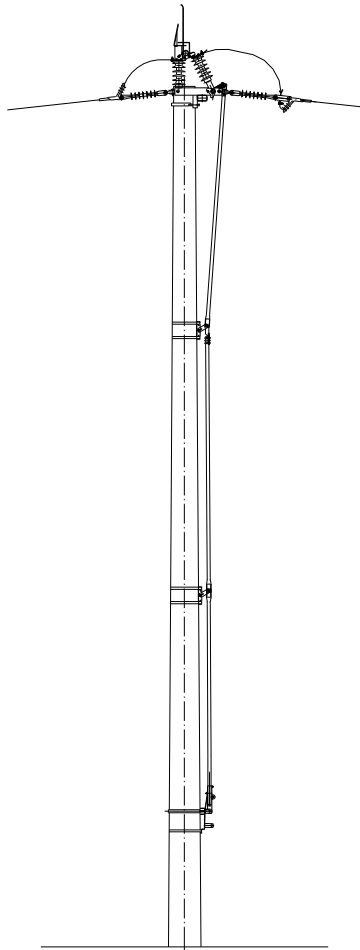
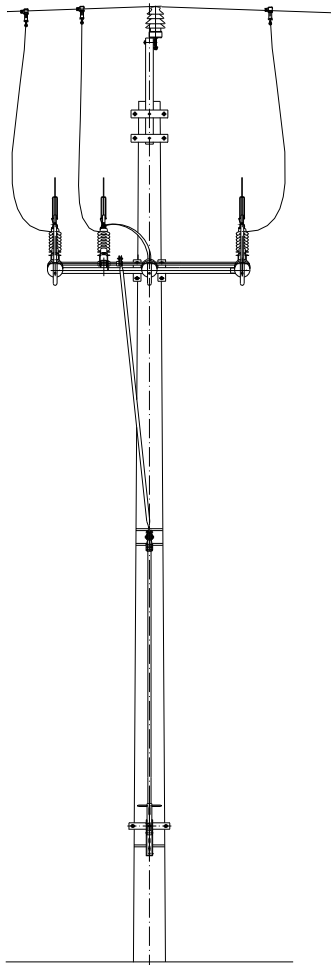
Three-pole outdoor load disconnecter DRIBO F1c GB R for U_r of 25 kV



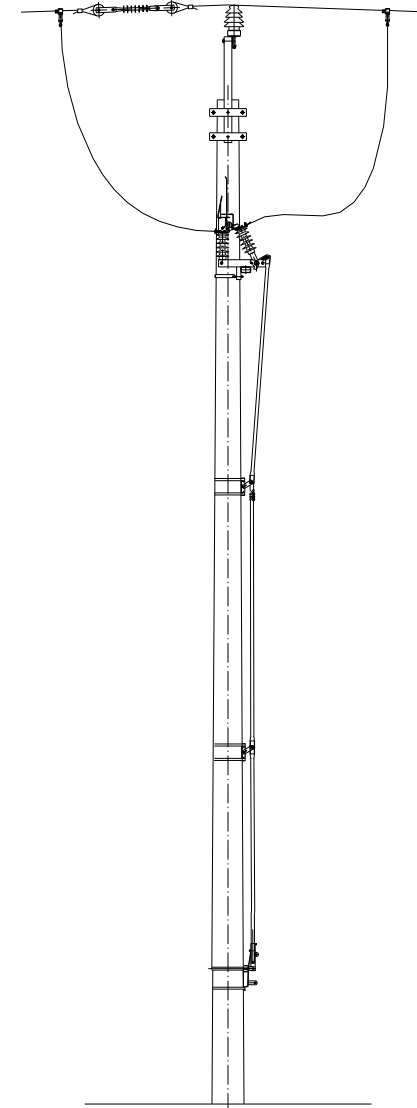
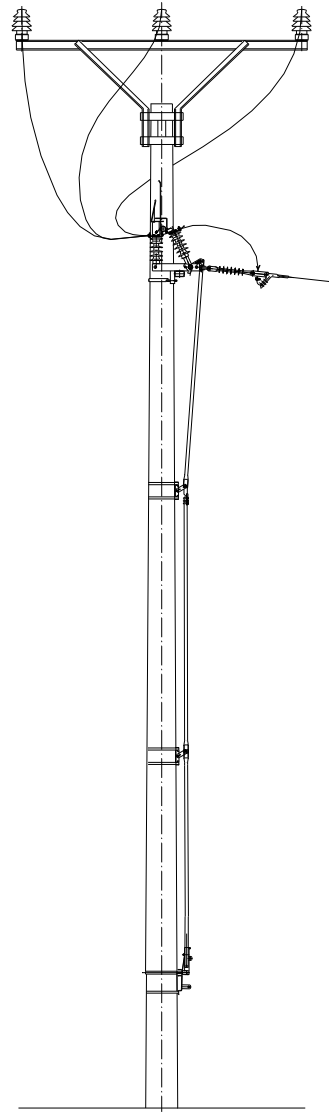
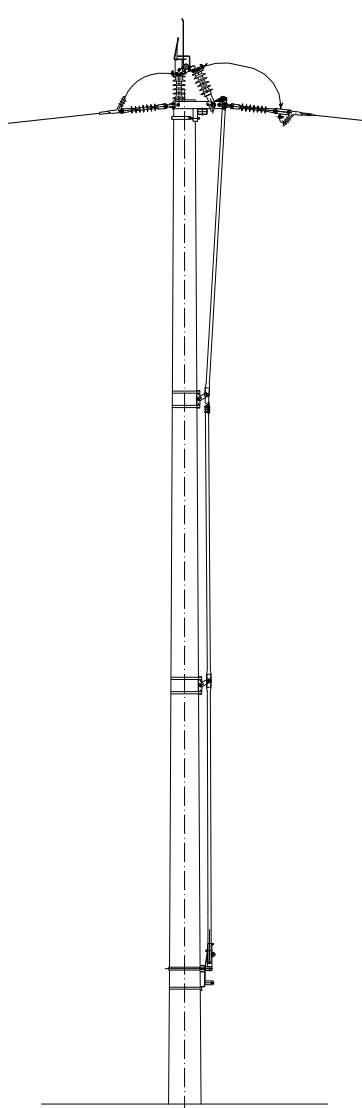
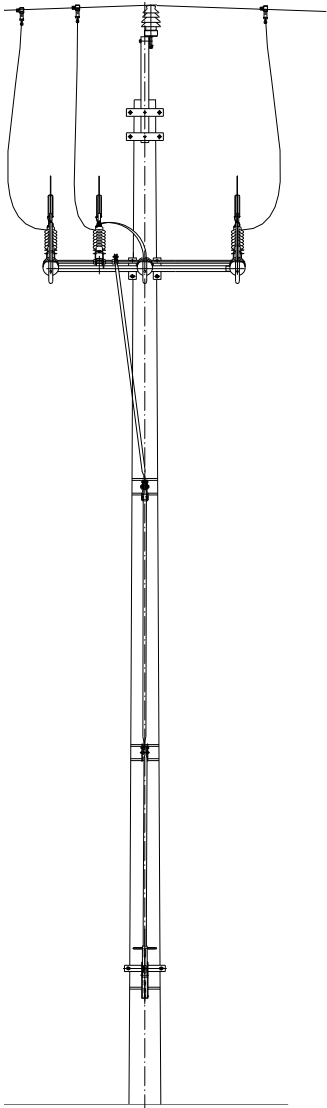
Three-pole outdoor load disconnecter DRIBO F1c GB R for U_r of 38.5 kV



Drive mechanism installation for outdoor load disconnectors DRIBO Flc GB R mounted on a pole of 10.5 m height



Drive mechanism installation for outdoor load disconnectors DRIBO Flc GB R mounted on a pole of 12 m height



Specifications are subject to change without notice.

DRIBO 03/2011