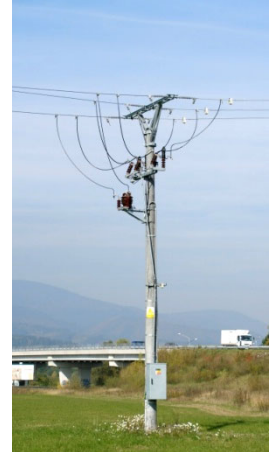




**DRIBO, spol. s r.o. (Ltd.)**

## Quick Product Summary

The company DRIBO, spol. s r.o. (Ltd.), with its headquarters in Brno, Czech Republic, was founded in 1995. The company is involved in the manufacturing and sales of electric devices (disconnectors, switch disconnectors, circuit breakers), and MV switchboards and MV components (within the voltage range of 6 kV to 38.5 kV). Furthermore, the company provides complete deliveries of remote control systems for outdoor devices and switching stations. The company has achieved firm position between the other suppliers of the above product assortment for both the Czech and Slovak power utility companies. You may find the DRIBO products in all the Czech and Slovak power distribution companies where also most of our production is delivered.



In 1998, the daughter company DRIBO Stará Turá s.r.o. (Ltd.) was founded in the Slovak Republic.

The production of switching devices and its applications mostly uses the know-how of the German manufacturer DRIESCHER GmbH. The quality and reliability of apparatus and switchboards supplied has been verified by many years of operation of such devices in the power utility networks and by notable industrial companies.

DRIBO, spol. s r.o. is holder of the ISO 9001, ISO 14001 and OHSAS 18001 certificates. The quality level of material used and care exercised in the production process guarantee low operation and maintenance costs in the future.



All switching devices and switchboards supplied are of simple and robust design, which provides for their high mechanical resistance and long service life, while keeping to high reliability of functioning. DRIBO, spol. s r. o. guarantees its product's reliable and maintenance-free operation for the time period of 10 years.



**DRIBO, spol. s r.o.**  
**Pražákova 36**  
**619 00 Brno**  
**Czech Republic**

**Phone: +420 533 101 111**  
**Phone: +420 543 321 111**  
**Fax: +420 543 216 619**  
**E-mail: [dribo@dribo.cz](mailto:dribo@dribo.cz)**

Detailed information to our products may be found at our internet address:  
**<http://www.dribo.eu>**

**Outdoor load disconnectors with oil quenching chambers – Fla 15/60**

- single- and three-pole design
- rated voltage 25 and 38,5 kV
- rated current 400 and 630 A
- horizontal and vertical design
- also designed for doubled, insulated and ecological power lines
- possibility of under voltage assembly

**Outdoor load disconnectors with vacuum quenching chambers – Fla 15/97**

- single- and three-pole design
- rated voltage 12, 25 and 38,5 kV
- rated current 400 and 630 A
- horizontal and vertical design
- also designed for doubled, insulated and ecological power lines
- possibility of under voltage assembly

**Outdoor load disconnectors with quenching horns – DRIBO Fib**

- single- and three-pole design
- rated voltage 25 and 38,5 kV
- rated current 400 and 630 A
- horizontal and vertical design
- also designed for ecological power lines

**Outdoor load disconnectors with spring based quenching system – DRIBO Fic**

- single- and three-pole design
- rated voltage 25 and 38,5 kV
- rated current 400 A
- horizontal and vertical design
- also designed for ecological power lines
- possibility of under voltage assembly

**Outdoor disconnectors**

- single- and three-pole design
- rated voltage 25 and 38,5 kV
- rated current 400 and 630 A
- horizontal and vertical design

**Outdoor disconnectors into the power lines – DRIBO Flrm**

- single-pole design
- rated voltage 25 and 38,5 kV
- rated current 400 and 1200 A
- types for mounting on a console and within the range of the line span
- possibility of under voltage assembly

**Outdoor fuse bases without or with surge arresters**

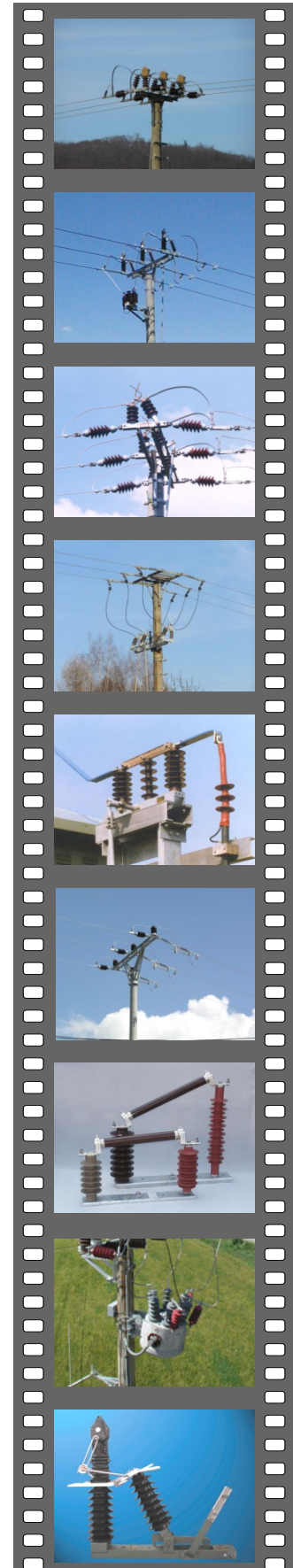
- single-pole design
- rated voltage 25 and 38,5 kV
- for fuses 2 – 200 A
- various designs
- without or with surge arresters (ABB, Raychem, Tridelta)

**Outdoor circuit breakers GVR Recloser and OSM/TEL**

- three-pole design
- rated voltage 15, 27 and 38 kV
- rated current 630 A

**Outdoor load disconnectors and disconnectors for railways**

- single- and double-pole design
- rated voltage up to 29 kV
- rated current up to 3150 A
- horizontal and vertical design



**Indoor circuit breakers – DRIESCHER**

- three-pole design
- rated voltage 12, 25 and 38,5 kV
- rated current 630 – 2500 A

**Indoor circuit breakers – Tavrida Electric**

- single- and three-pole design
- rated voltage 12 and 25 kV
- rated current 630 – 1000 A

**Indoor load disconnectors – H 22**

- single- and three-pole design
- rated voltage 12, 25 and 38,5 kV
- rated current 630 and 1250 A
- designed for various applications

**Indoor load disconnectors – H 27**

- single- and three-pole design
- rated voltage 12 and 25 kV
- rated current 630 A
- designed for various applications

**Indoor disconnectors – Itr**

- single- and three-pole design
- rated voltage 12, 25 and 38,5 kV
- rated current up to 6300 A
- 1,5 and 3 kV disconnectors line

**Indoor fuse bases**

- single- and three-pole design
- rated voltage 12, 25 and 38,5 kV

**Indoor load disconnectors and disconnectors for railways**

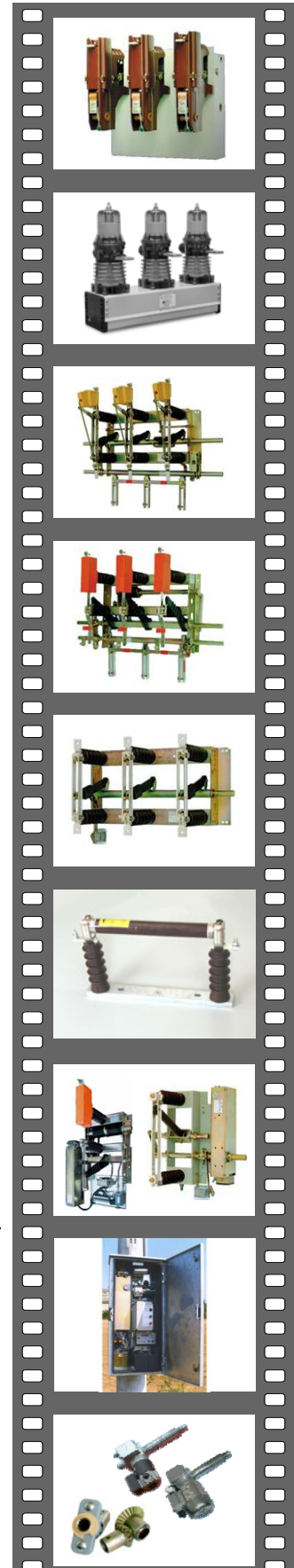
- single-pole design
- rated voltage up to 27 kV
- rated current up to 4000 A

**The system of the remote controlled stations in medium voltage nets**

- for outdoor disconnectors and load disconnectors
- for outdoor circuit breakers
- for MV substations
- complex delivery

**Hand and motor operated drives**

- for outdoor switching devices, remote control
- for indoor switching devices
  - assembly on the device's shaft
  - cell-door assembly
  - designed also for old technology replacement etc.



**Medium voltage switchgears – D 12 and D 24**

- air-insulated
- rated voltage 12 and 25 kV
- rated current 630 A
- with H 27 load disconnectors
- compact switchgears

**Medium voltage switchgears – D 1200**

- air-insulated
- rated voltage 12 and 25 kV
- rated current 630 A
- with H 27 load disconnectors

**Medium voltage switchgears – F 24 (F 600)**

- air-insulated
- rated voltage 12 and 25 kV
- rated current 630 A
- with H 27 load disconnectors

**Medium voltage switchgears – W 12, W 24 and W 38,5**

- air-insulated
- rated voltage 12, 25 and 38,5 kV
- rated current up to 1250 A
- with H 22 load disconnectors and KUF circuit breakers

**Medium voltage switchgears – K 900 S and K 900 P**

- air-insulated
- rated voltage 25 kV
- rated current 630 A
- K 900 S – with H 27 SEA load disconnector
- K 900 P – with fuses

**Switchboard retrofit**

- RS06, S11 and others switchgears – replace of load disconnectors
- replace of disconnectors' actuators
- easy and cheap old technology replace

**Insulators, quick couplings**

- outdoor supporting insulators
- Fiberlink silicon tension insulators
- for the connection and termination of steel, copper and aluminium conductors and the AIFe ropes

**Medium voltage fuses**

- rated voltage 3 – 38,5 kV
- rated current 6 – 160 A
- according to IEC 60282-1
- for outdoor and indoor switching devices

**Accessories**

- fuse reductions
- fuse adaptors
- inlets and clamps for live works

